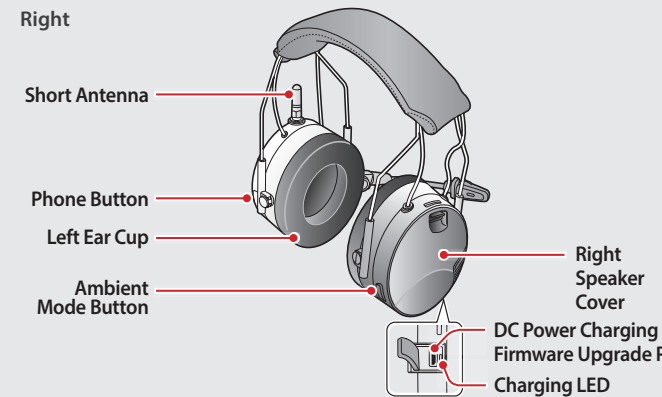
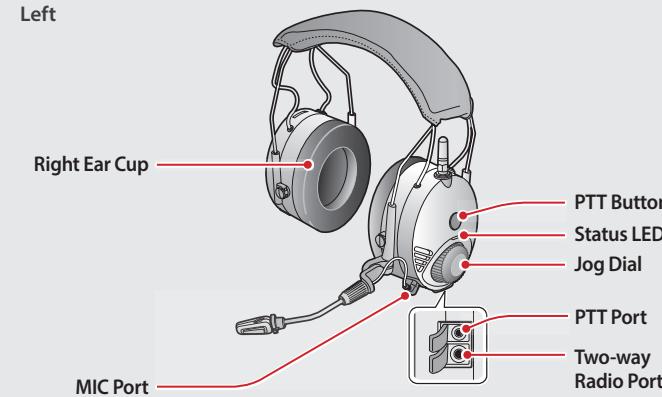
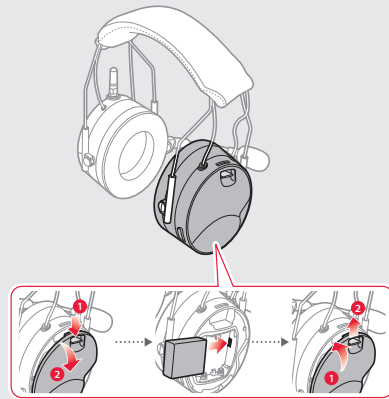


PREPARATION

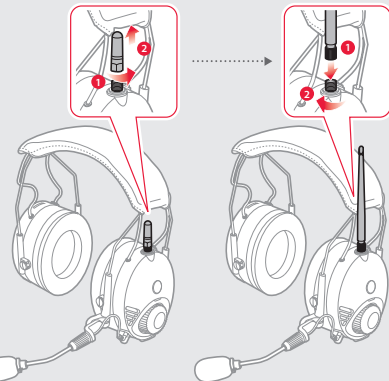
Knowing the Headset Layout



Installing the Battery

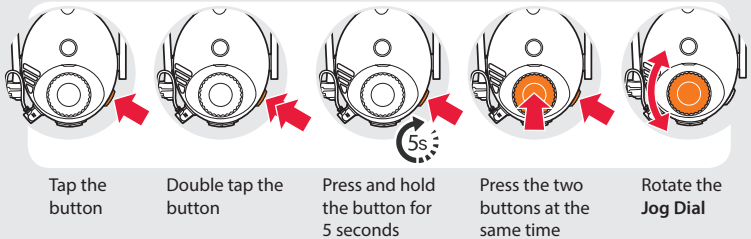


Replacing the Antenna

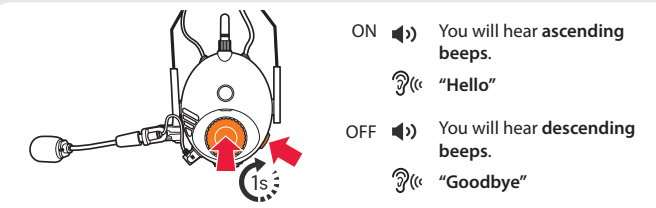


BASIC OPERATION

Operating the Buttons

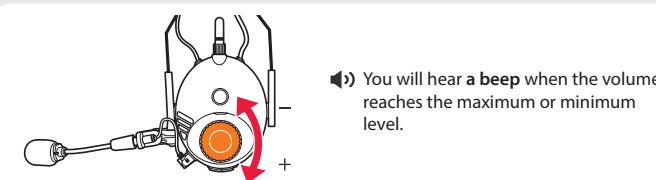


Turning On/Off the Headset

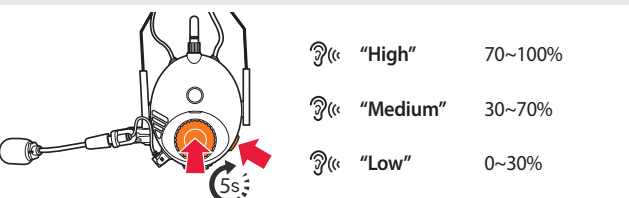
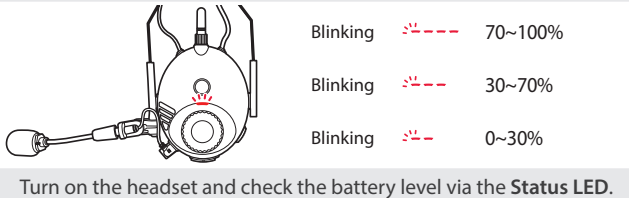


Simultaneously press and hold the **Jog Dial** and the **Phone Button** for 1 second to turn on or off the headset.

Adjusting the Volume

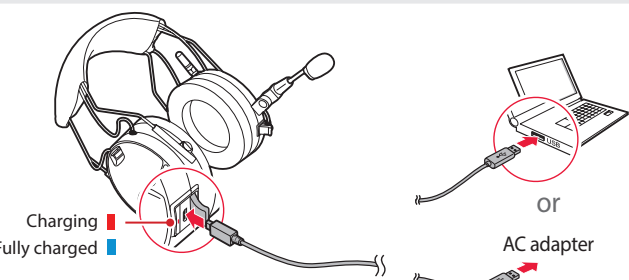


Checking the Battery Level



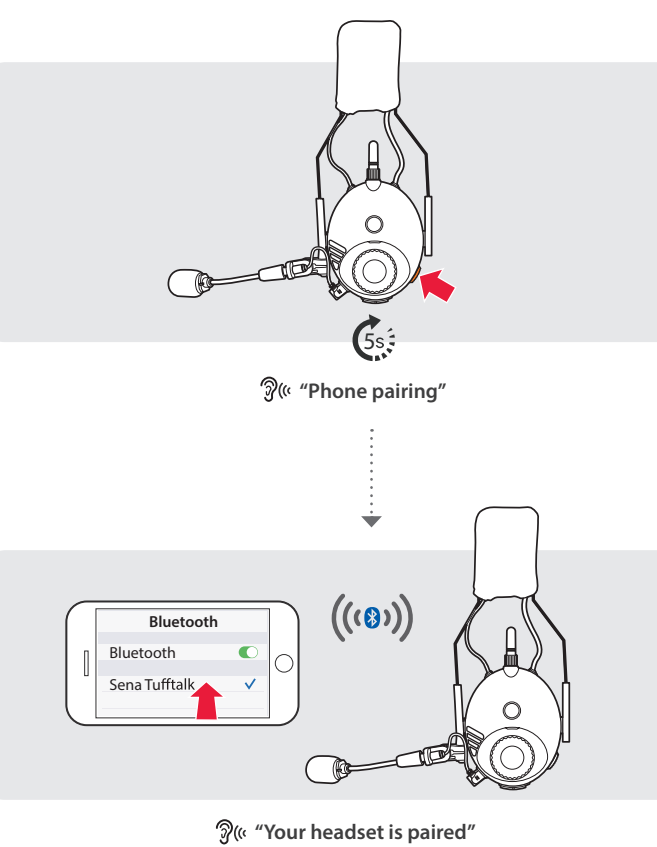
Or, press and hold the **Jog Dial** and the **Phone Button** for 5 more seconds when the headset turns on. You will hear a **triple beep** and a **voice prompt**.

Charging the Battery

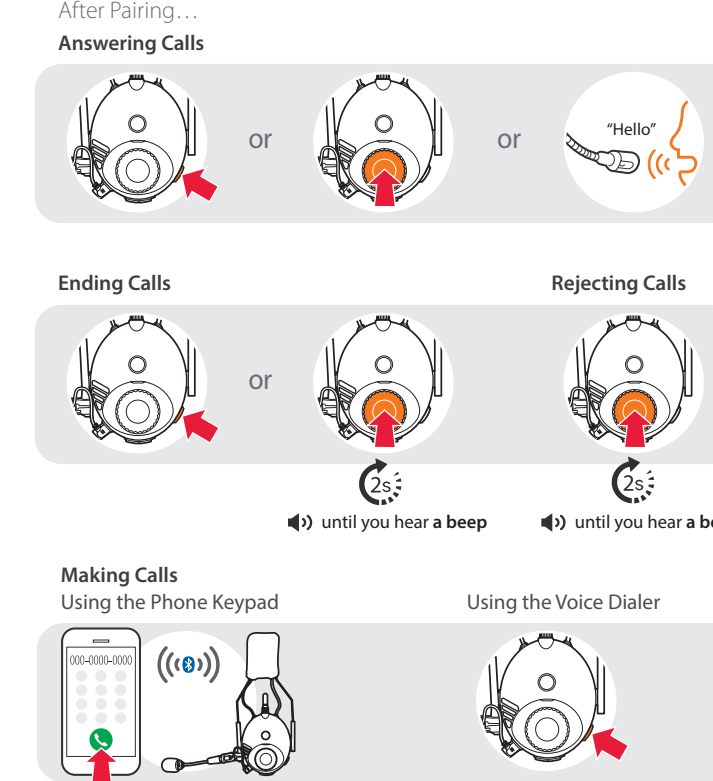


PAIRING

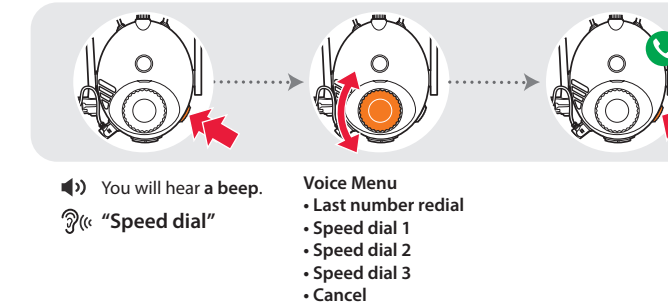
Pairing with Mobile Devices - Phone, Music



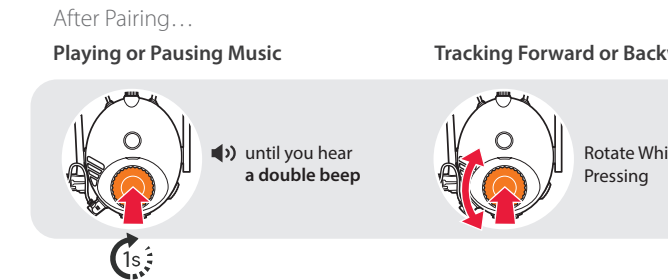
Using Phone Features



Using the Speed Dial



Listening to Music



HANTZ + PARTNER
The Upgrade Company! www.hantz.com

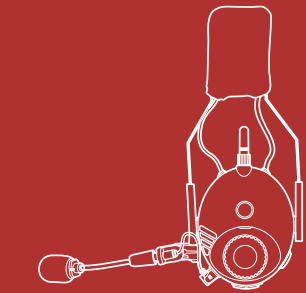
Germany: Tel: +49 761 / 59 21 00 Fax: +49 761 / 58 52 28
Swiss: Tel: 061 / 27 311 - 31 Fax: 061 / 27 311 - 39
Austria: Tel: 01 / 58 55 430 Fax: 01 / 58 55 460

www.tufftalk.de/en

TUFFTALK

Quick Start Guide

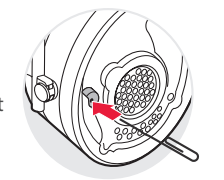
Industrial Bluetooth®
Communication System



You can view other Sena products at the Sena website:
www.senahdsets.de

TRUBLESHOOTING

- Factory Reset**
If you want to restore the Tufftalk to factory default settings, press and hold the **Phone Button** for 10 seconds. Tap the **Jog Dial**. The headset automatically restores the default settings and turns off.
- Fault Reset**
If the Tufftalk is not working properly for any reason, push the pin-hole reset button located below the left ear cup.



OPTIONAL CABLE ACCESSORIES

- | | |
|--|--|
| TUFFTALK-A0110 2-way Radio Cable for Kenwood Twin-pin Connector | TUFFTALK-A0114 2-way Radio Cable for Yaesu Single-pin Connector |
| TUFFTALK-A0111 2-way Radio Cable for Motorola Twin-pin Connector | TUFFTALK-A0115 2-way Radio Cable for Midland Twin-pin Connector |
| TUFFTALK-A0112 2-way Radio Cable for Motorola Single-pin Connector | TUFFTALK-A0116 2-way Radio Cable with an Open End |
| TUFFTALK-A0113 2-way Radio Cable for Icom Twin-pin Connector | TUFFTALK-A0117 2-way Radio Cable with Straight Type for Midland or Icom Twin-pin Connector |

HANTZ + PARTNER
The Upgrade Company! www.hantz.com

Germany: Tel: +49 761 / 59 21 00 Fax: +49 761 / 58 52 28
Swiss: Tel: 061 / 27 31 1-31 Fax: 061 / 27 311-39
Austria: Tel: 01 / 58 55 430 Fax: 01 / 58 55 460

SENA www.tufftalk.de/en

SETTING

- Method1) Using the headset**
You will hear a double beep sound.
"Configuration menu"
- Method2) Using the Sena Device Manager**
Connect the headset to your computer via a USB cable. Launch the Sena Device Manager and click **DEVICE SETTING** to configure the headset settings.
For details about downloading the Sena Device Manager, refer to the leaflet included in the package.
- Method3) Using the Sena Smartphone App**
 - On your smartphone, download the Sena Smartphone App for Android or iPhone from Google Play or App Store. Refer to www.sena.com/headset-app/ for more details.
 - Pair your smartphone with the headset.
 - Run the Sena Smartphone App. Swipe the screen to the right and tap **Settings** to configure the headset settings.

RADIO

- Turning On/Off the FM Radio**
You will hear a double beep sound.
"FM on" or "FM off"
- Seeking Stations**
Rotate While Pressing
- Listening to Preset Stations**
- Saving or Deleting Stations**
 - To Save: "Preset (#)"
 - To Delete: "Delete preset (#)"

USEFUL FUNCTIONS

- Turning On/Off the Ambient Mode**
- Using the Built-in Two-way Radio**
First, connect the two-way radio cable with the headset.
Push to talk

- Using the Intercom**
After Pairing...
You can start or end a two-way intercom conversation with each headset.

INTERCOM

- Pairing with Other Headsets**
Headset A, Headset B
"Intercom pairing"
Follow the steps above to pair with two or more headsets.