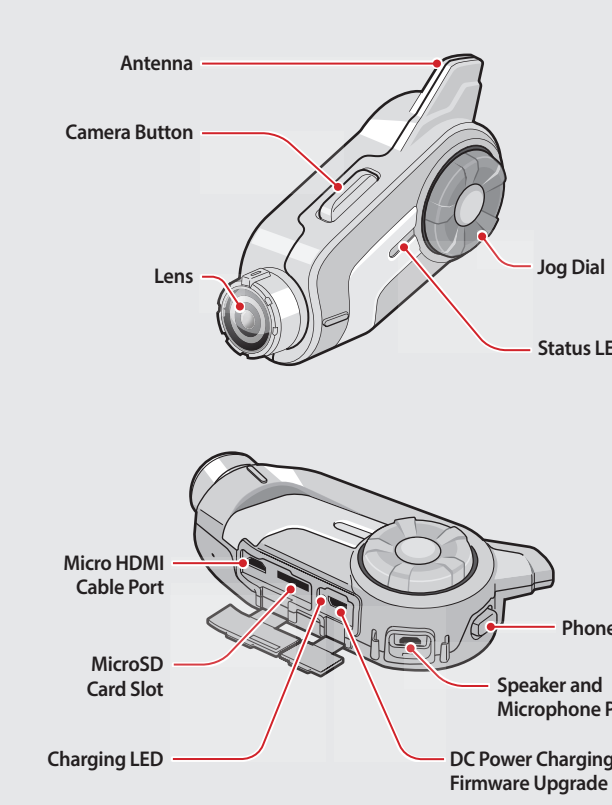
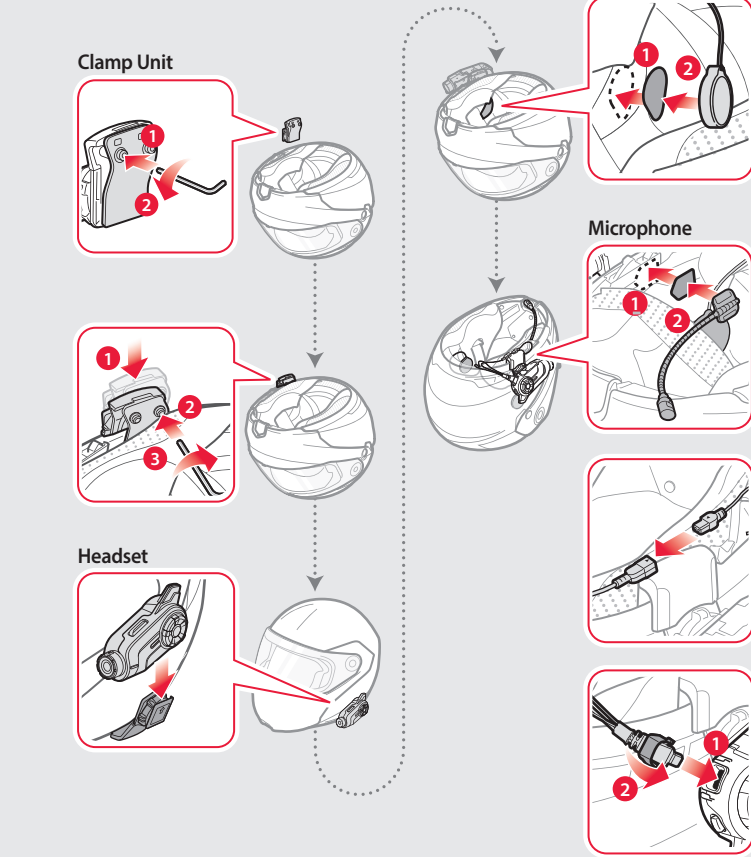


# PREPARATION

## Knowing the Headset Layout

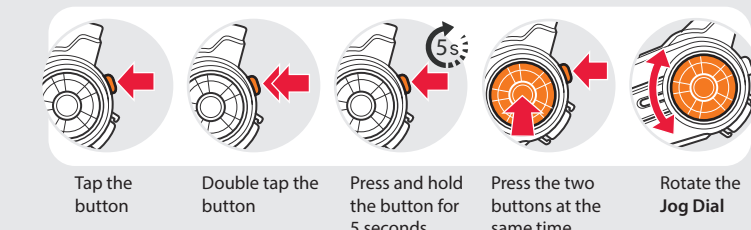


## Installing the Headset

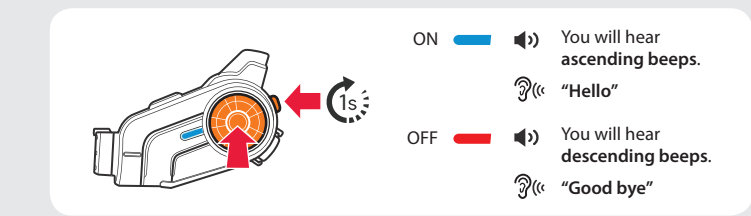


# BASIC OPERATION

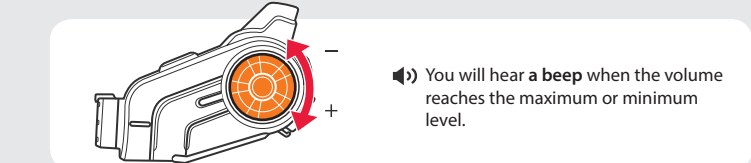
## Operating the Buttons



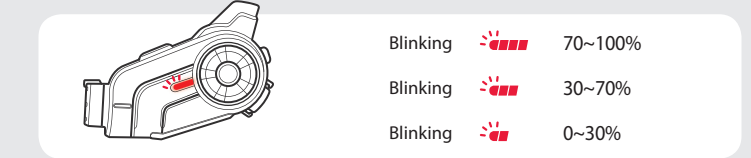
## Turning On/Off the Headset



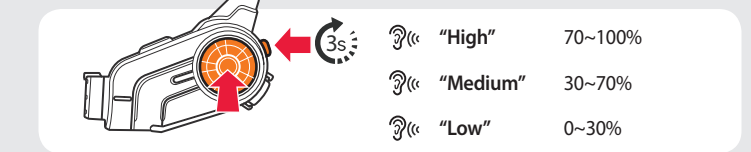
## Adjusting the Volume



## Checking the Battery Level

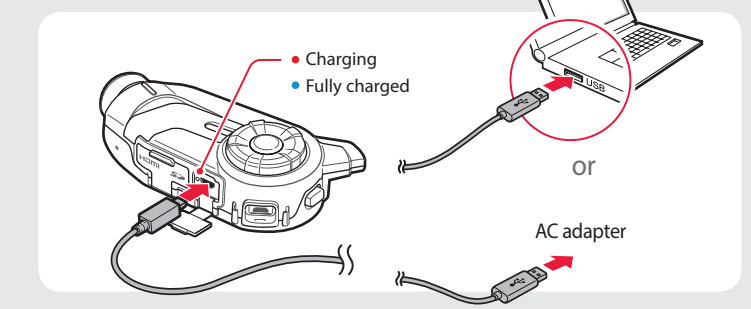


Turn on the headset and check the battery level via the Status LED.



Or, press and hold the Jog Dial and the Phone Button for 3 more seconds when the headset turns on. You will hear a triple beep and a voice prompt.

## Charging the Battery

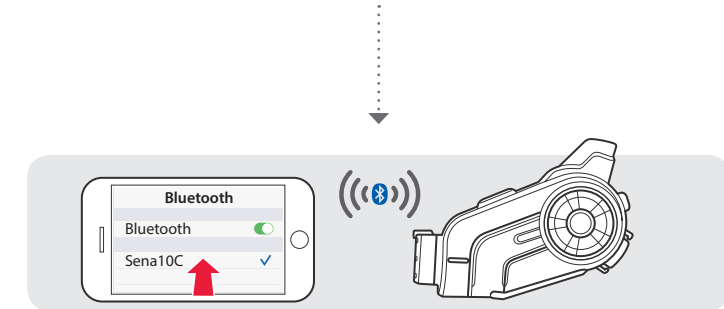


# PAIRING

## Pairing with Mobile Devices - Phone, Music



"Phone pairing"



"Your headset is paired"

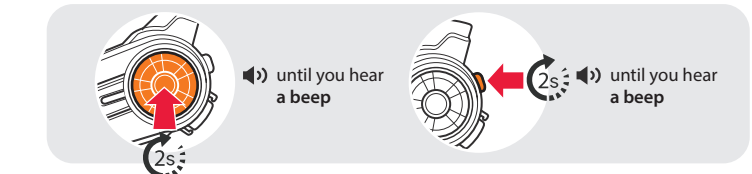
## Using Phone Features



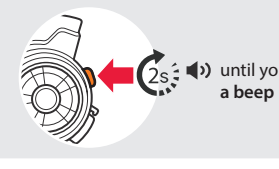
## Ending Calls



## Rejecting Calls



## Transferring Calls between a mobile phone and the headset



## Making Calls



## Using the Speed Dial



You will hear a beep. "Speed dial"

Voice Menu

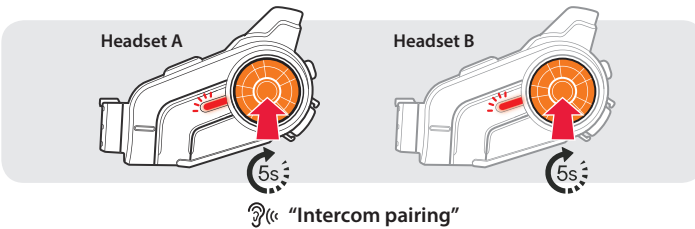
- Last number redial
- Speed dial 1
- Speed dial 2
- Speed dial 3
- Cancel

## Listening to Music



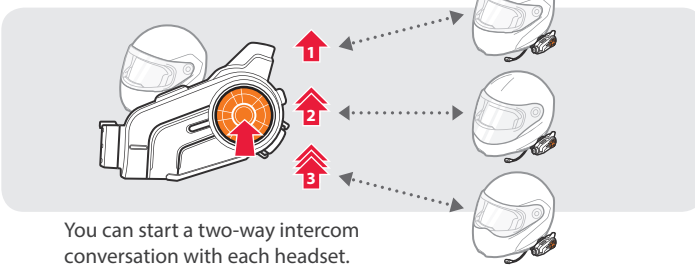
## INTERCOM

### Pairing with Other Headsets



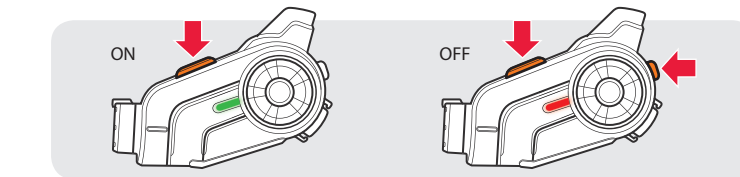
### Using the Intercom

After Pairing...

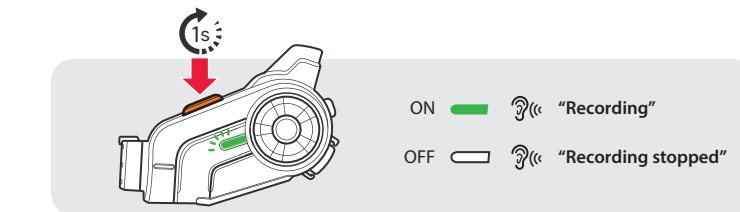


## CAMERA

### Turning On/Off the Camera



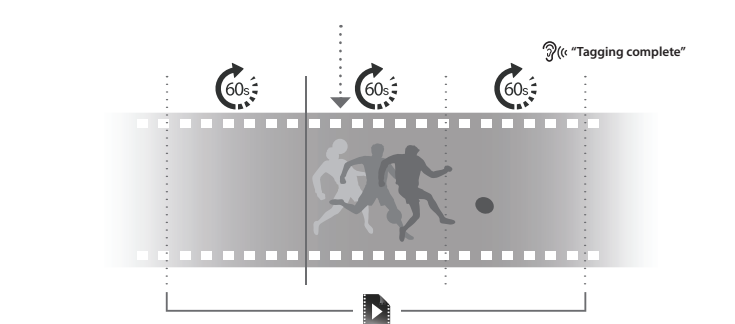
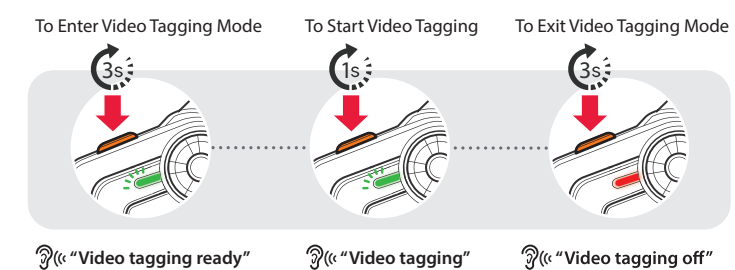
### Recording Videos



### Taking Photos



### Tagging Videos



**HANTZ + PARTNER**  
The Upgrade Company! [www.hantz.com](http://www.hantz.com)

Deutschland: Tel.: 0761 / 59 21 00 Fax: 0761 / 58 52 28  
Schweiz: Tel.: 061 / 27 311-31 Fax: 061 / 27 311-39  
Österreich: Tel.: 01 / 58 55 430 Fax: 01 / 58 55 460

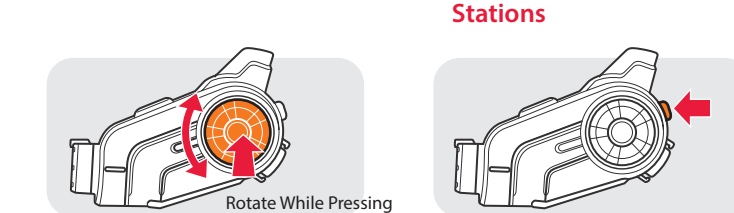
[www.senaheadsets.de](http://www.senaheadsets.de)

## RADIO

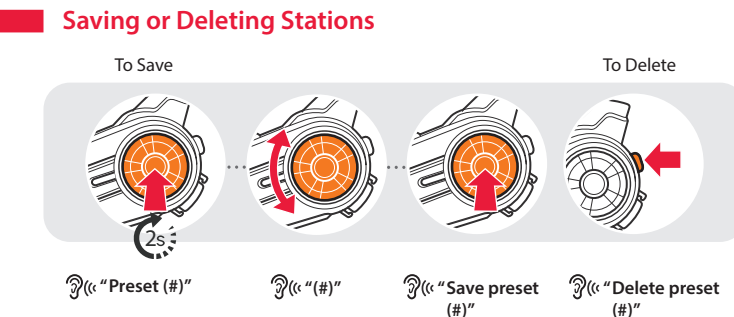
### Turning On/Off the FM Radio



### Seeking Stations

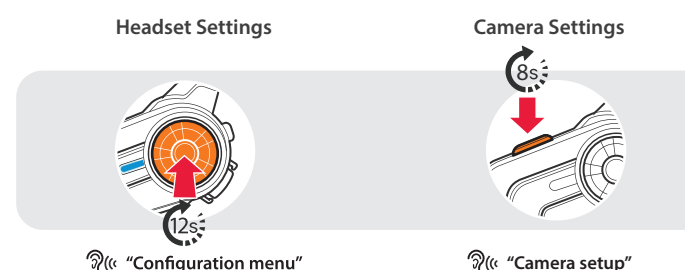


### Listening to Preset Stations



## SETTING

### Method1) Using the headset



### Method2) Using the Sena Device Manager

Connect the headset to your computer via a USB cable. Launch the Sena Device Manager and click **DEVICE SETTING** to configure the headset settings.

For details about downloading the Sena Device Manager, refer to the leaflet included in the package.

### Method3) Using the Sena Smartphone App

1. On your smartphone, download the Sena Smartphone App for Android or iPhone from Google Play or App Store. Refer to [www.senaheadsets.de/download](http://www.senaheadsets.de/download) for more details.
2. Pair your smartphone with the headset.
3. Run the Sena Smartphone App. Swipe the screen to the right and tap **Setting** to configure the headset settings.

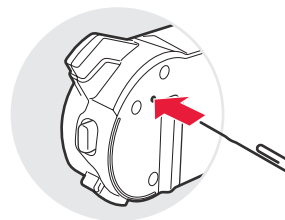
## TROUBLESHOOTING

### Factory Reset

If you want to restore the 10C to factory default settings, press and hold the **Phone Button** for 12 seconds. Tap the **Jog Dial**. The headset automatically restores the default settings and turns off.

### Fault Reset

If the 10C is not working properly for any reason, push the pin-hole reset button located on the back of the headset.



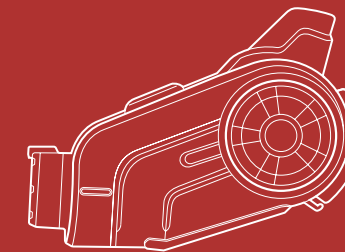
**SENA**

**HANTZ + PARTNER**  
[www.senaheadsets.de](http://www.senaheadsets.de)

# 10C

## Quick Start Guide

Motorcycle Bluetooth® Camera & Communication System



Sena

[www.senaheadsets.de](http://www.senaheadsets.de)

[www.facebook.de/BikerHeadset](https://www.facebook.de/BikerHeadset)

E-mail: [info@bikerheadset.com](mailto:info@bikerheadset.com)

You can view other Sena products at the Sena website:  
[www.senaheadsets.de](http://www.senaheadsets.de)